



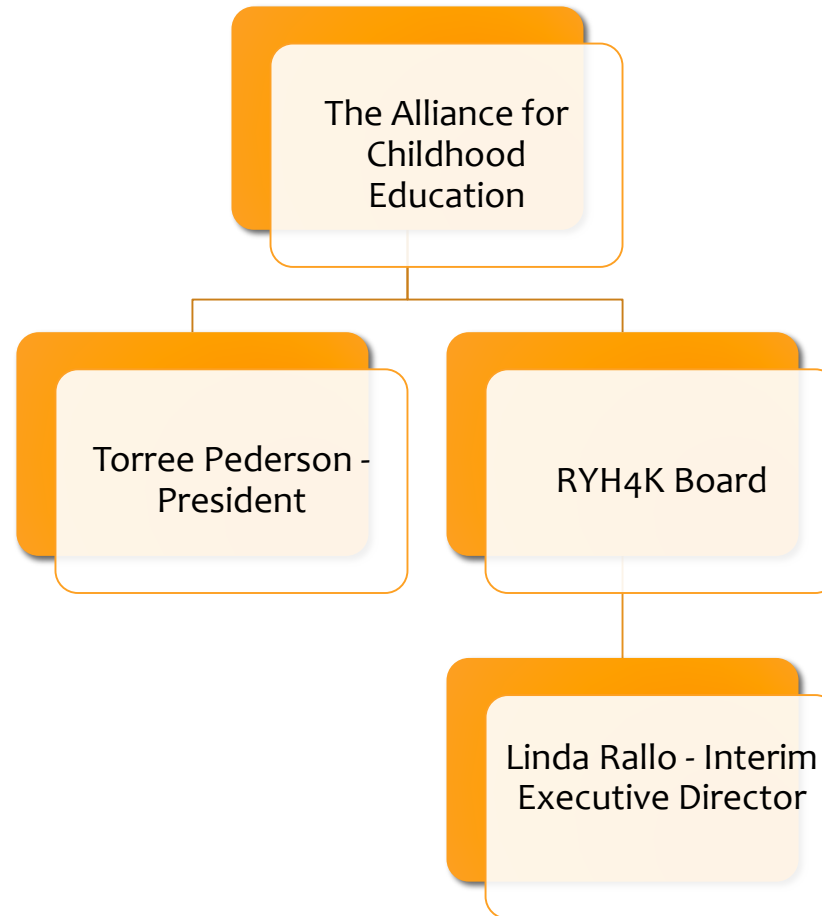
RAISE YOUR HAND FOR KIDS

MCHC Annual Legislative Meeting

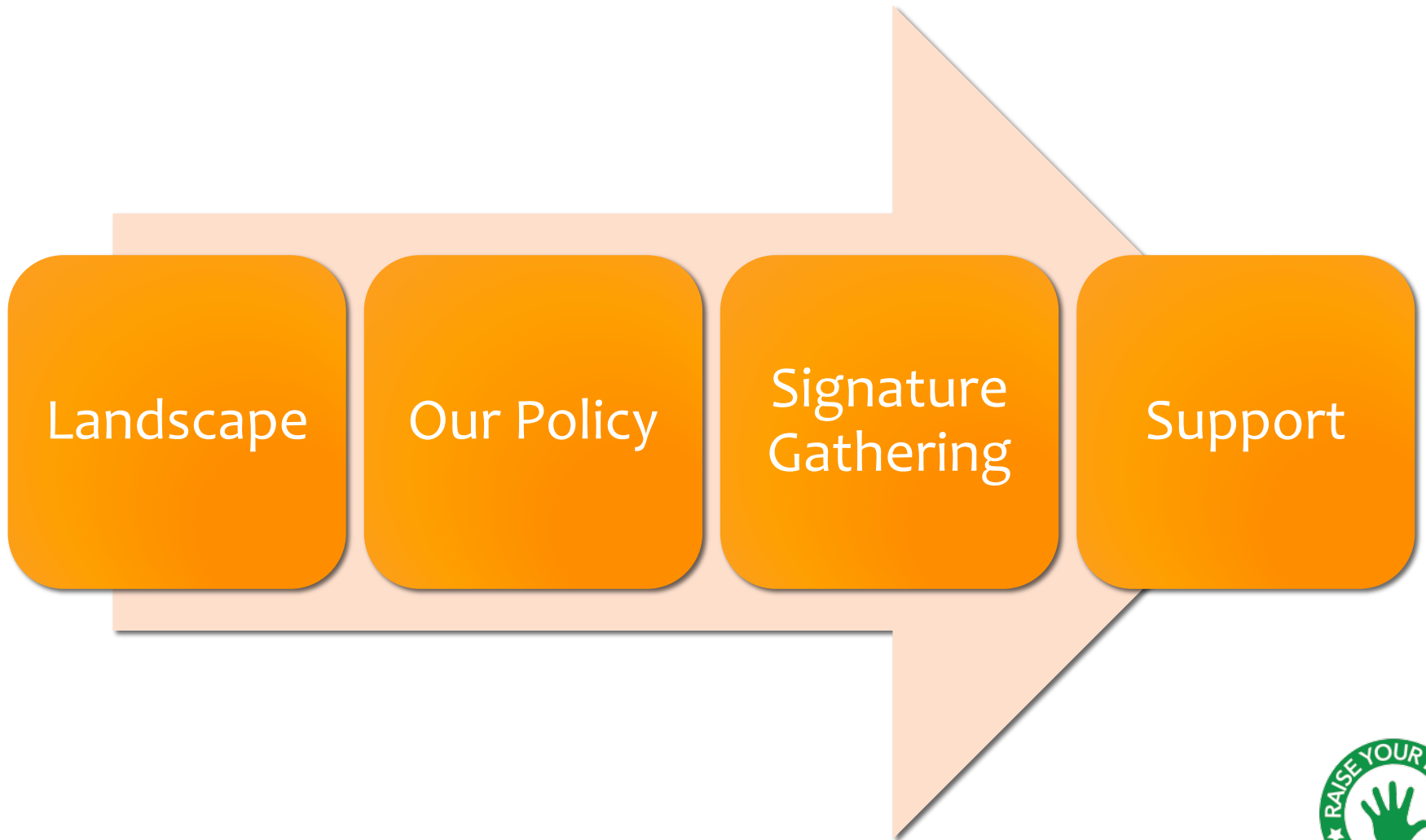
October 23, 2015



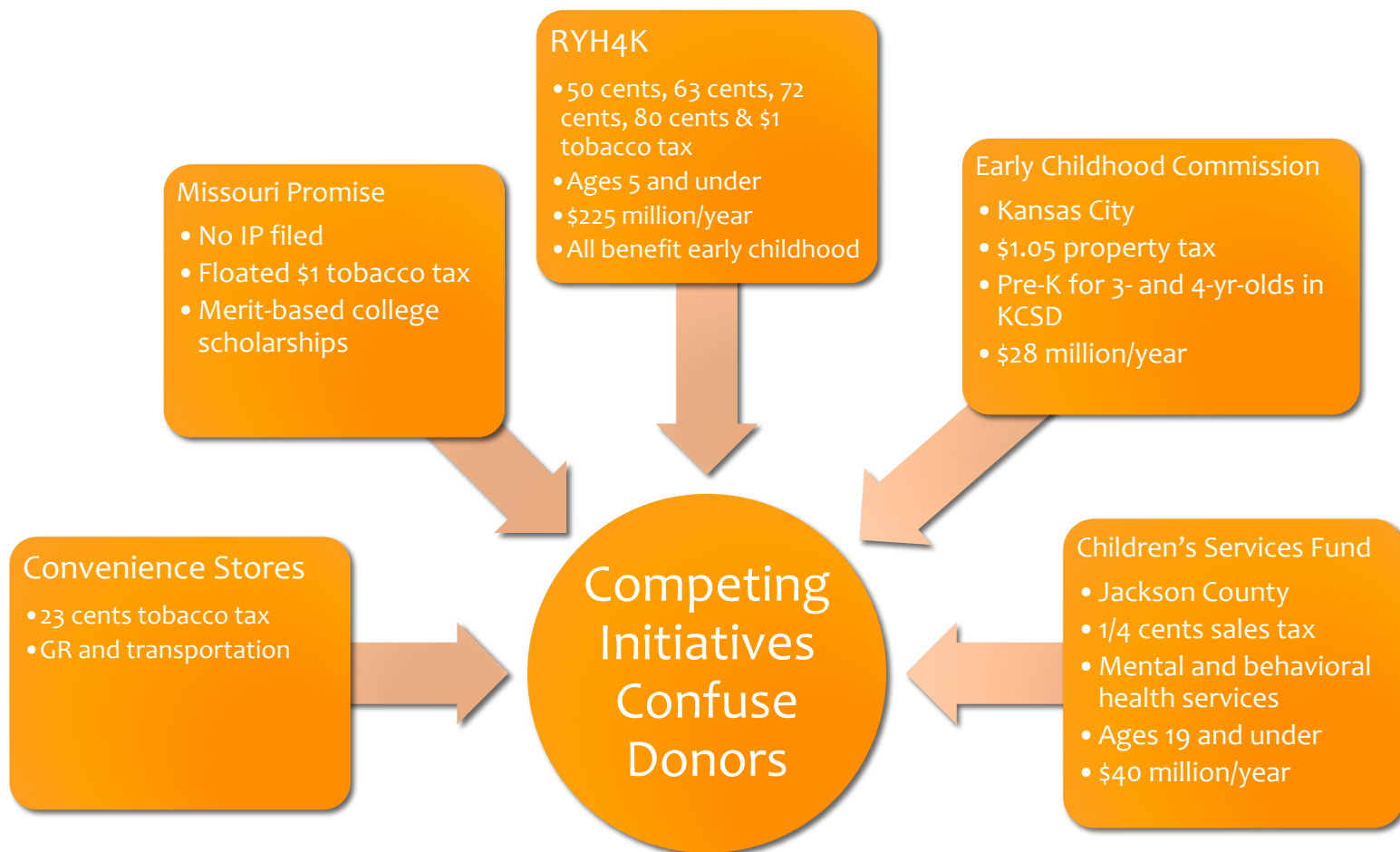
Our Structure



Where We Are



Landscape



Our Policy

Voters approve tax increase

CBEC gains fiduciary responsibility over revenue dissemination, accountability and outcome measurement

Grant criteria considerations

Improve targeted outcomes

Leverage matching \$

Local community needs

Sustainability

Grants can be used for

Increasing ECE access

Improving ECE quality

Increasing access health screenings

Professional development & training

Increasing program coordination & public info

Smoking cessation



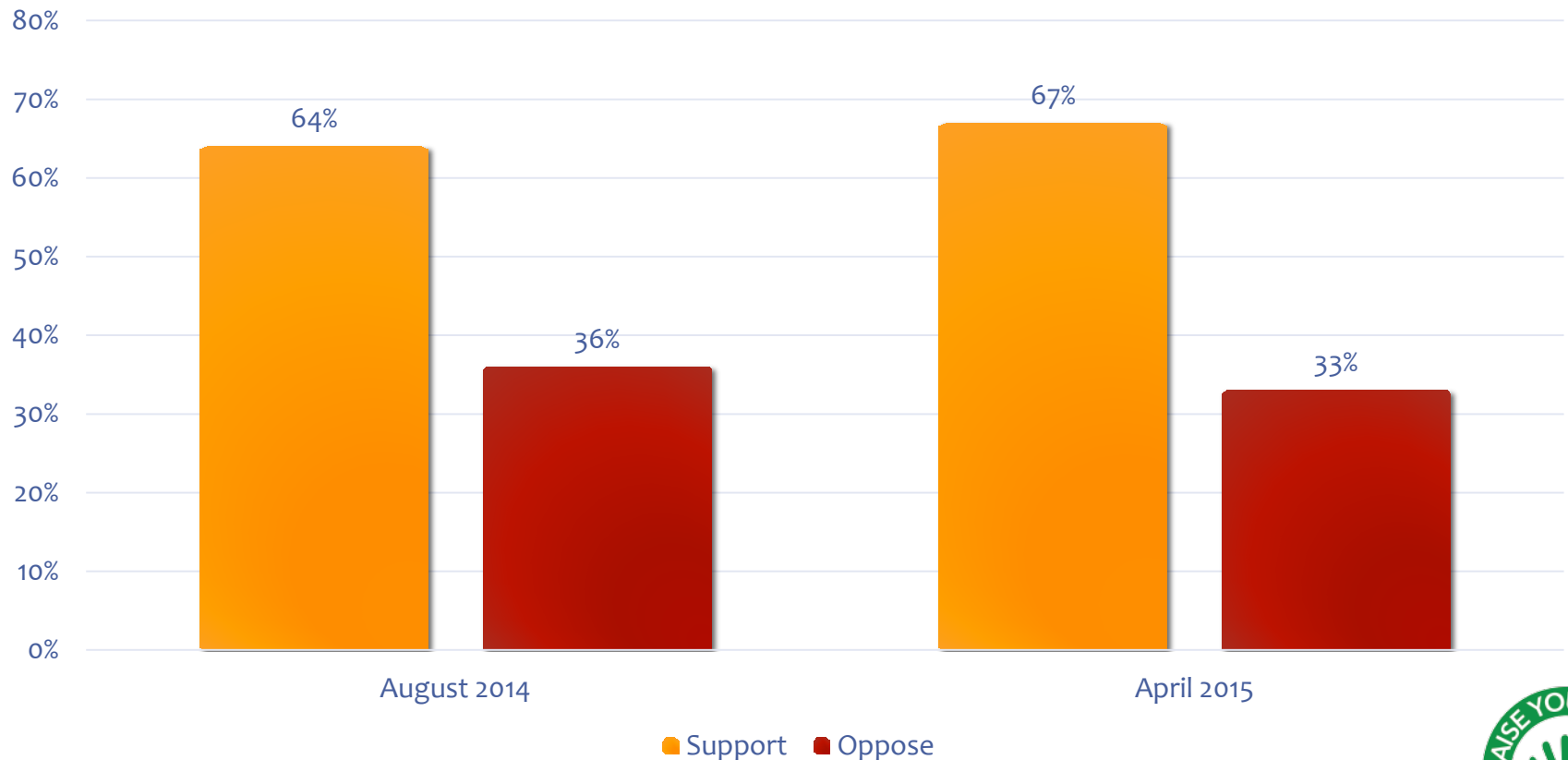
Additional Policy Info

- Fair-share grant distribution is based on residential population of children ages birth through 5.
- CBEC
 - 5 state directors from DESE, DSS, the Department of Health and Senior Services, the Department of Mental Health and the Head Start – State Collaboration Office
 - 2 members of the Missouri General Assembly from the Joint Committee on Education (opposite chambers; opposite parties)
 - 6 private citizens representing Head Start, early childhood, higher education, business, faith and medicine.
- Admin cap of 8%
- Term limits
- Conflict of interest policy



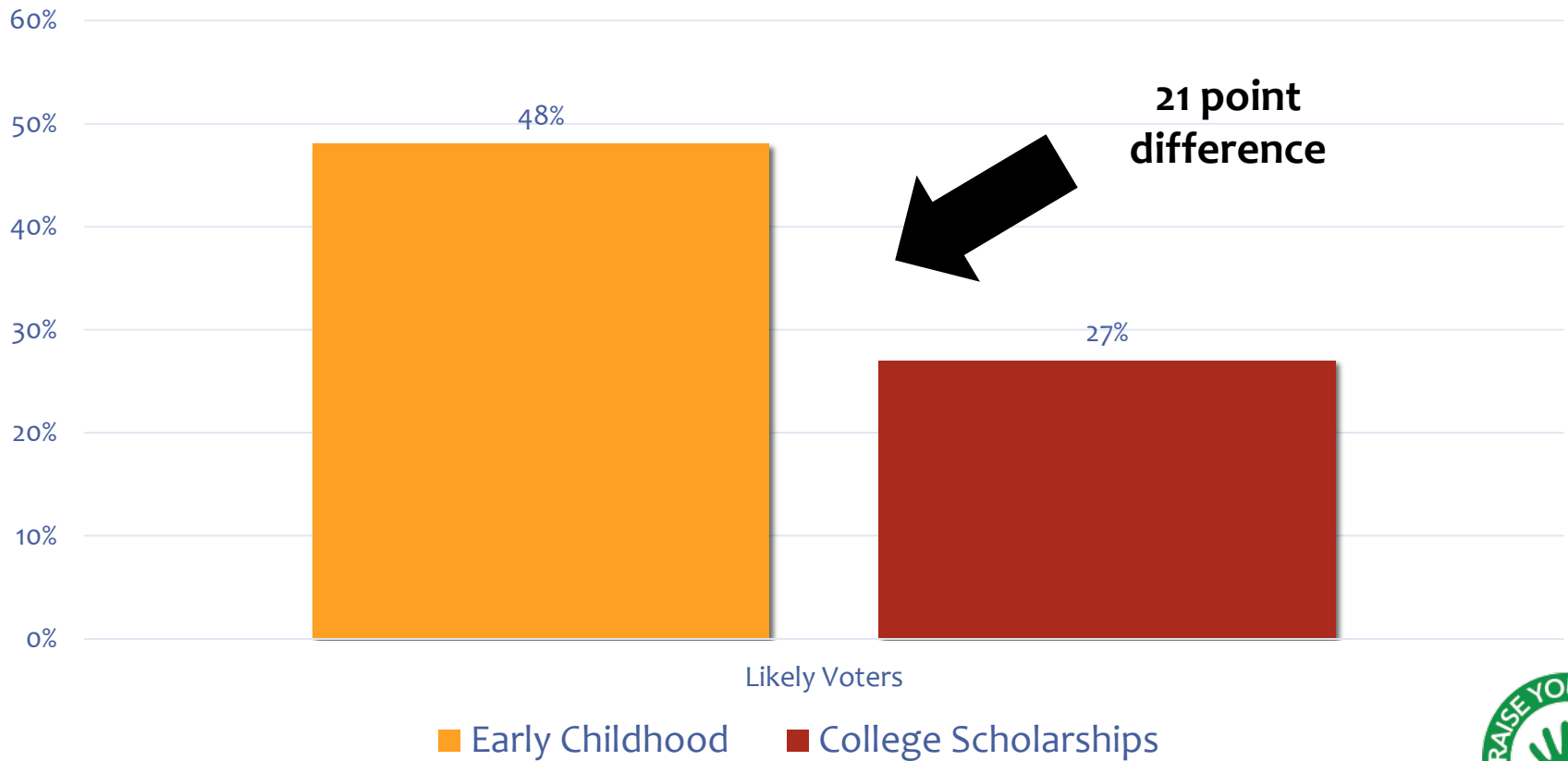
Voters Support Early Childhood

Polling Results Testing a Tobacco Tax for Early Childhood Programs



Voters Prefer Early Childhood

New Tobacco Tax Revenue Head to Head – Early Childhood vs. College Scholarships



RYP4K - The Better Choice

A statewide priority – Early childhood is what Missourians want, need and care about.

- Ferguson Commission (St. Louis)
- For the Sake of All (St. Louis)
- Every Child Promise (Springfield)
- Success by Six (St. Joseph)
- Success by Six (Cape Girardeau)
- Big 5 Initiative (Kansas City)
- Cradle to Career (Columbia)
- They're Worth It (Rolla)



Signature Gathering

- SOS certifies language then signature gathering begins
- Will gather 165K signatures to meet the 101K requirement
- Signatures due May 8, 2016
- Collecting early saves money
- Signature collection costs are approximately \$550K



How Can You Help?

- Endorse
www.raiseyourhandforkids.org
- Volunteer
- Donate
- Facebook
- Twitter @RYH4KMO
- LTEs/Op-Eds





RaiseYourHandforKids.org