

Poverty, Community Action, and Health

Scott Anglemeyer

Kansas Association of Community Action Programs

April 11, 2017

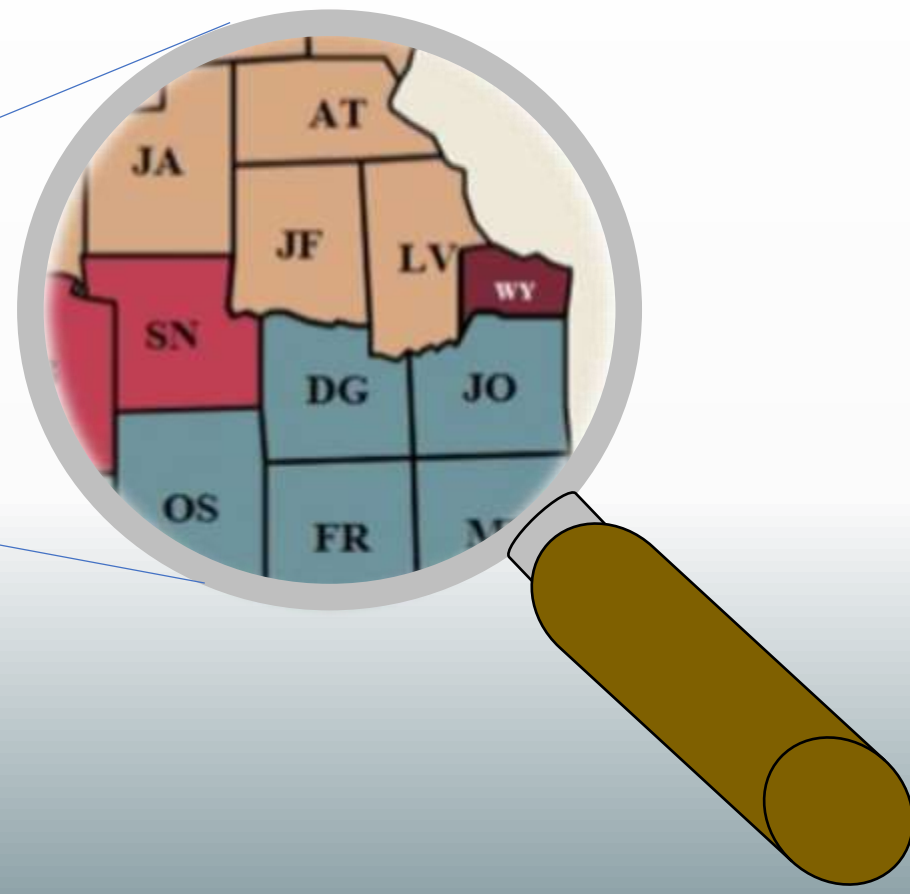
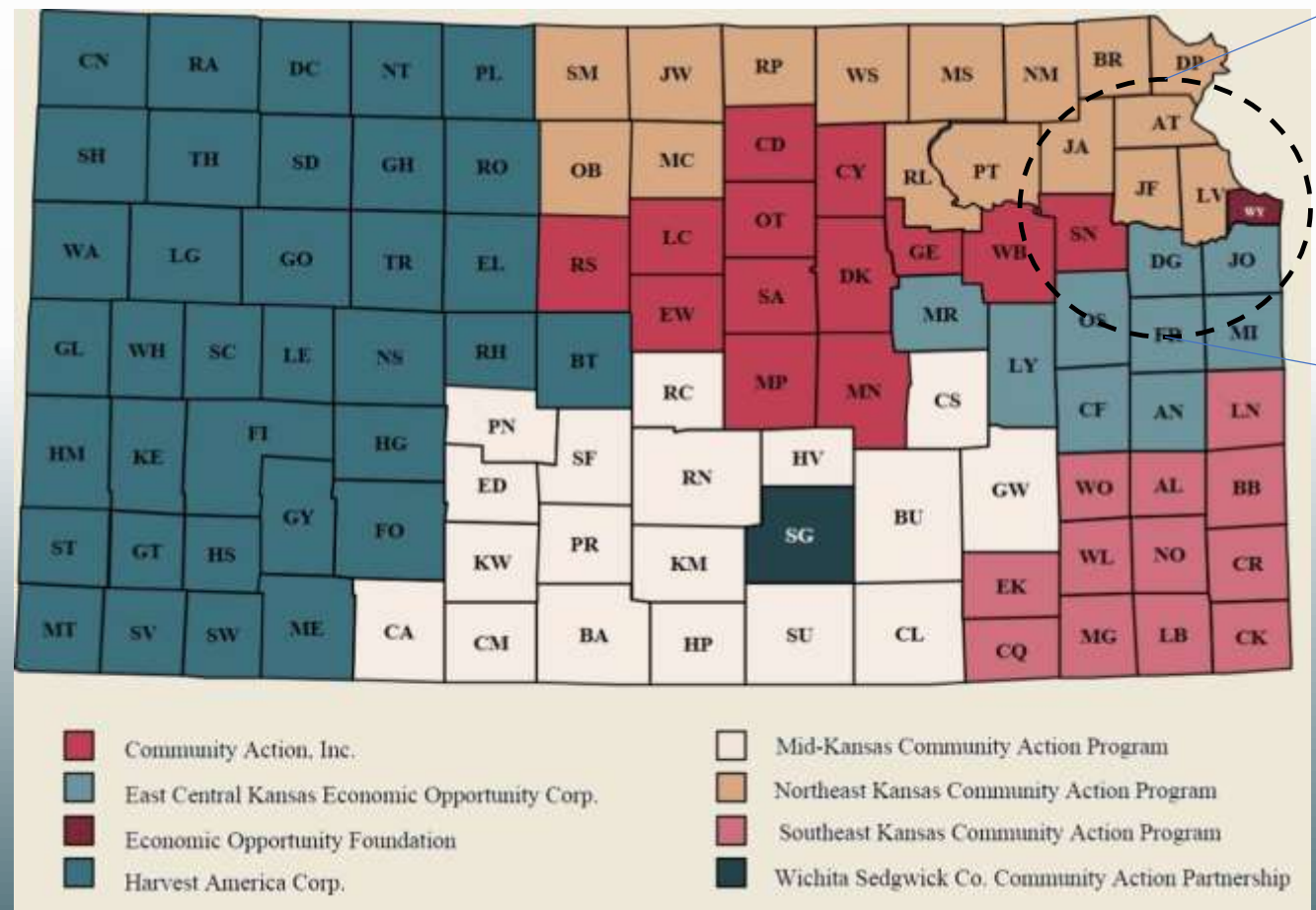
Introduction to Community Action

About KACAP

KACAP is the membership organization for community action agencies (CAAs) in Kansas

- Wichita-Sedgwick County Community Action Program (WSCCAP)
- Southeast Kansas Community Action Program (SEK-CAP)
- Economic Opportunity Foundation (EOF)
- East Central Kansas Economic Opportunity Corporation (ECKAN)
- Northeast Kansas Community Action Program (NEK-CAP)
- Mid-Kansas Community Action Program (MIDCAP)
- Community Action, Inc. (CAI)
- Harvest America Corporation (HAC)

Service Areas of Kansas CAAs



What Are Community Action Agencies?

- Anti-poverty agencies
- Originally created by the federal Economic Opportunity Act of 1964
- Responsible for addressing the causes and conditions of poverty
- Tripartite boards of directors
 - Public officials
 - Private sector
 - Representatives of low-income members of the community
- Maximum feasible participation

What do Community Action Agencies do?

- No two CAAs are alike
- Services generally include:
 - Financial counseling
 - Income tax preparation
 - Employment services
 - Case management
 - Weatherization
 - Emergency assistance
 - Head Start and Early Head Start
 - Housing services
- Over 14,000 people received services last year

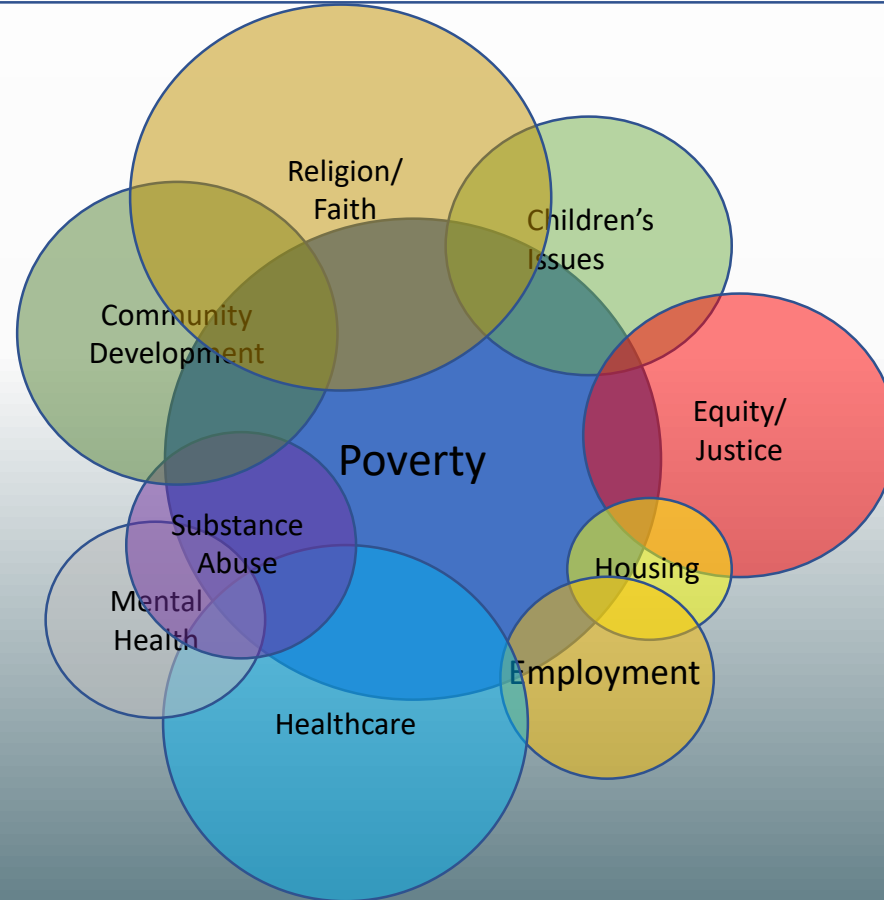
The Promise of Community Action

Community Action changes people's lives, embodies the spirit of hope, improves communities and makes America a better place to live. We care about the entire community, and we are dedicated to helping people help themselves and each other.

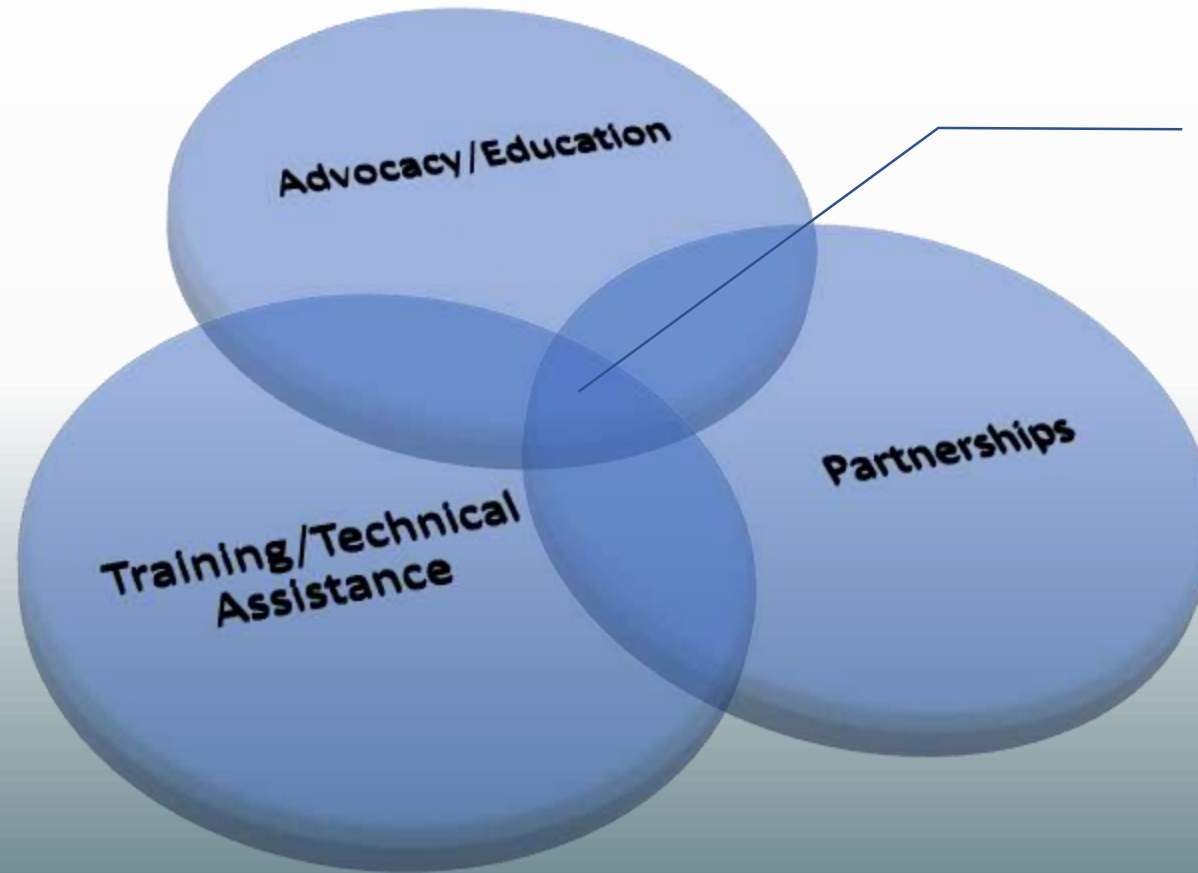
What does KACAP do?

- Advocates and educates
 - Community action agencies
 - Poverty in general
- Strengthens the network
- Widens the circle

Because no presentation is complete without a Venn diagram



Once you start Venn diagramming...



Kansas
Conference on
Poverty

Kansas Conference on Poverty

- July 19-21, 2017
- Capitol Plaza Hotel, Topeka, KS
- Registration information will be released in April
- Open to anyone interested in topics related to poverty

Poverty in Wyandotte and Johnson Counties

There ~~Isn't~~ a Lot of Poverty in Johnson County [^]Is

County	Percent of Population in Poverty	Number of People in Poverty
Johnson	6.2%	34,556
Wyandotte	23.9%	37,963

Source: U.S. Census Bureau, 2011-2015
American Community Survey 5-Year
Estimates

Families in Poverty, by County

Category	Johnson County	Wyandotte County
All Families	4.0%	19.1%
With Children	6.0%	29.7%
Married Families	1.8%	9.3%
With Children	2.1%	15.2%
Single Females, No Husband Present	14.9%	41.7%
With Children	20.4%	53.1%*

Source: U.S. Census Bureau, 2011-2015
American Community Survey 5-Year
Estimates

*60% of the single female-headed families with children under 5 in Wyandotte County have incomes below the poverty rate.

Children and Youth in Poverty

	Johnson County		Wyandotte County	
	Number	Percent	Number	Percent
Children under 18	10,734	7.5%	16,636	37.3%
Children under 5	3,392	8.9%	5,374	40.1%
5 to 17 years old	7,342	7.0%	11,262	36.1%

Source: U.S. Census Bureau, 2011-2015
American Community Survey 5-Year
Estimates

There are 609 “unrelated individuals” aged 15-17 in Johnson County. 94.7% of them are in poverty.

There are 305 “unrelated individuals” aged 15-17 in Wyandotte County. 100% of them are in poverty.

Poverty Rates by Race/Ethnicity

Race/Ethnicity	Johnson County	Wyandotte County
White alone	5.3%	19.6%
Black or African-American alone	13.7%	31.0%
American Indian and Alaska Native	11.7%	41.8%
Asian alone	8.3%	28.5%
Native Hawaiian and Other Pacific	11.3%	32.3%
Some other race alone	17.6%	28.5%
Two or more races	12.8%	32.7%
Hispanic or Latino origin (any race)	16.9%	32.2%
White alone, not Hispanic or Latino	4.5%	13.4%

Source: U.S. Census Bureau, 2011-2015
American Community Survey 5-Year
Estimates

Educational Attainment

	Percent of population 16 or older		Poverty rate for each level of education	
	Johnson	Wyandotte	Johnson	Wyandotte
Less than high school graduate	4.1%	21.3%	17.0%	30.4%
High school graduate	15.0%	32.9%	9.1%	17.1%
Some college, Associate's degree	27.8%	26.8%	6.1%	14.5%
Bachelor's degree or higher	53.2%	16.0%	2.4%	6.9%

Source: U.S. Census Bureau, 2011-2015
American Community Survey 5-Year
Estimates

Employment History in Past 12 Months

	Percent of Population 16 or older		Poverty Rate	
	Johnson	Wyandotte	Johnson	Wyandotte
Worked full time, year-round	50.7%	41.2%	1.2%	5.3%
Worked part-time or part-year	25.3%	25.3%	10.1%	29.3%
Did not work	24.1%	33.4%	10.6%	31.6%

Source: U.S. Census Bureau, 2011-2015
American Community Survey 5-Year
Estimates

It's More than Job Opportunities

Monthly Pay of Wyandotte County Jobs	Workers from Johnson		Workers from Wyandotte	
	Number	Percent of WY Jobs	Number	Percent of WY Jobs
\$1,250 or less (\$15,000 annually or less)	2,892	20.2%	5,151	35.9%
\$1,251 to \$3,333	6,095	20.9%	9,302	31.9%
More than \$3,333 (more than \$39,996 annually)	12,510	31.0%	7,748	19.2%

Source: U.S. Bureau of the Census,
Longitudinal Employer-Household
Dynamics
<http://lehd.ces.census.gov>

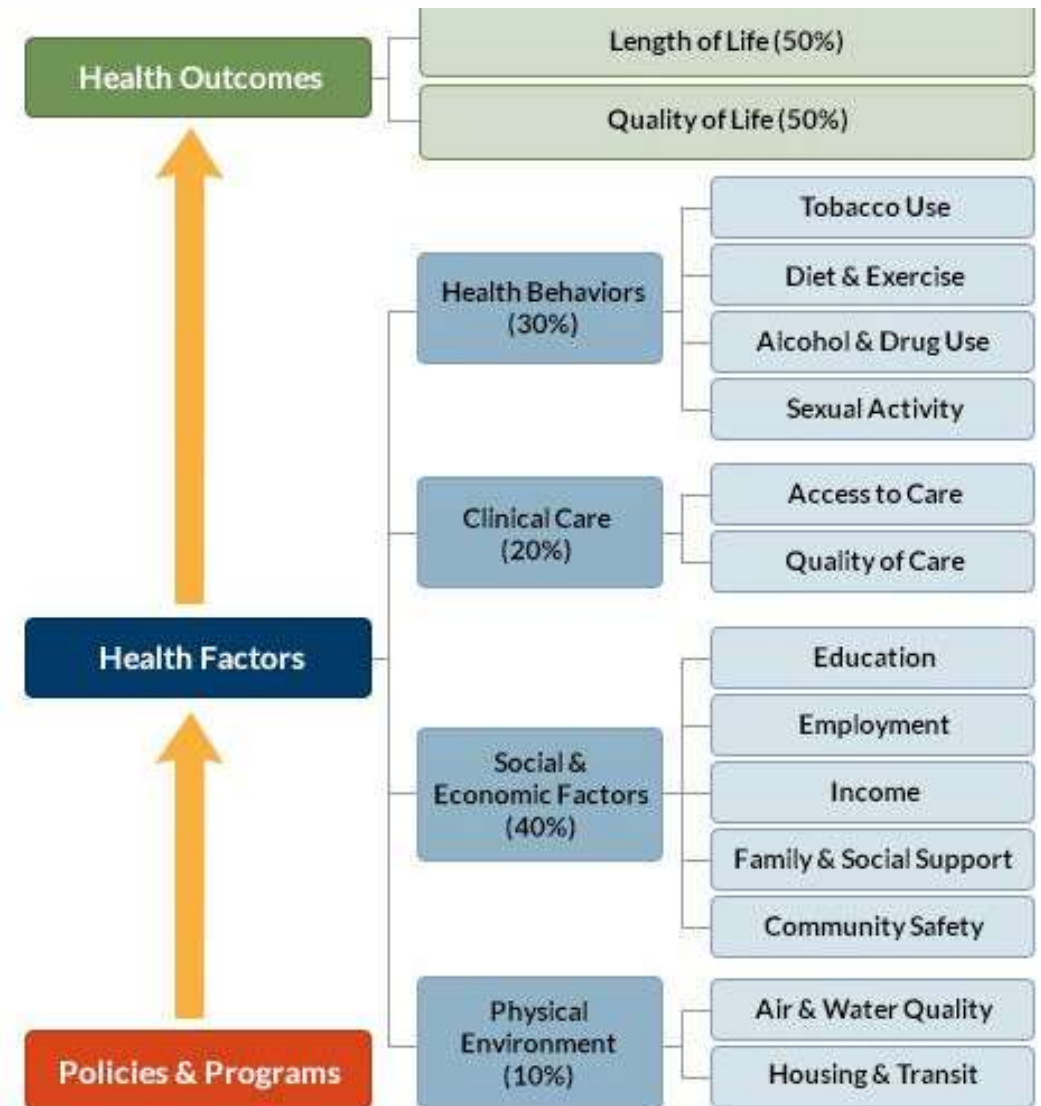
Poverty and Health

County Health Rankings 2017

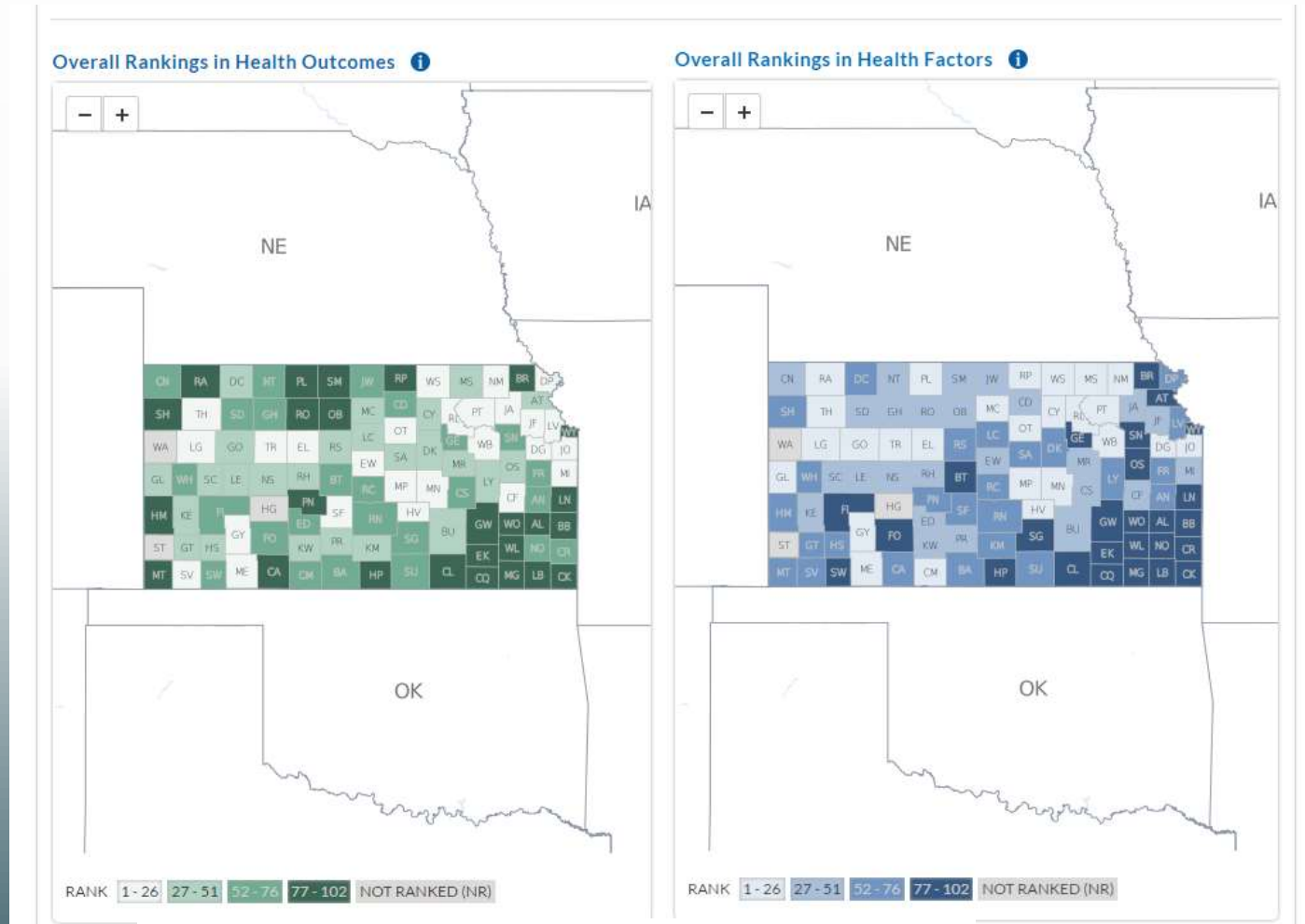
- Annual rankings published by the Robert Wood Johnson Foundation

www.countyhealthrankings.org/#howhealthy

- Two sets of rankings
 - Health Outcomes
 - Health Factors



Strong relationship between Health Outcomes and Health Factors



Source: <http://www.countyhealthrankings.org/app/kansas/2017/overview>

Health Outcomes

- Length of Life [50%]
 - Premature deaths (50%)
- Quality of Life [50%]
 - Poor or fair health (10%)
 - Poor physical health days (10%)
 - Poor mental health days (10%)
 - Low birthweight (20%)

Where do Johnson and Wyandotte rank on health outcomes?

	Johnson	Wyandotte
Health Outcomes	1	101
Length of Life	1	84
Quality of Life	1	102

Health Factors

- Health Behaviors [30%]
 - Adult smoking (10%)
 - Adult obesity (10%)
 - Food environment index (2%)
 - Physical inactivity (2%)
 - Access to exercise opportunities (1%)
 - Excessive drinking (2.5%)
 - Alcohol-impaired driving deaths (2.5%)
 - Sexually transmitted infections (2.5%)
 - Teen births (2.5%)
- Clinical Care [20%]
 - Uninsured (5%)
 - Primary care physicians (3%)
 - Dentists (1%)
 - Mental health providers (1%)
 - Preventable hospital stays (5%)
 - Diabetes monitoring (2.5%)
 - Mammography screening (2.5%)

Health Factors (continued)

- Social & Economic Factors [40%]
 - High school graduation (5%)
 - Some college (5%)
 - Unemployment (10%)
 - Child poverty (7.5%)
 - Income inequality (2.5%)
 - Children in single-parent households (2.5%)
 - Social associations (2.5%)
 - Violent crimes (2.5%)
 - Injury deaths (2.5%)
- Physical Environment [10%]
 - Air pollution—particulate matter (2.5%)
 - Drinking water violations (2.5%)
 - Severe housing problems (2%)
 - Driving alone to work (2%)
 - Long commute – driving alone (1%)

Where do Johnson and Wyandotte rank on health factors?

	Johnson	Wyandotte
Health Factors	1	102
Health Behaviors	1	101
Clinical Care	1	90
Social and Economic Factors	1	102
Physical Environment	82	98

Poverty and Health Factors

- Health Behaviors [30%]

- Adult smoking (10%)
- Adult obesity (10%)
- Food environment index (2%)
- Physical inactivity (2%)
- Access to exercise opportunities (1%)
- Excessive drinking (2.5%)
- Alcohol-impaired driving deaths (2.5%)
- Sexually transmitted infections (2.5%)
- Teen births (2.5%)

- Clinical Care [20%]

- Uninsured (5%)
- Primary care physicians (3%)
- Dentists (1%)
- Mental health providers (1%)
- Preventable hospital stays (5%)
- Diabetes monitoring (2.5%)
- Mammography screening (2.5%)

Poverty and Health Factors (continued)

- Social & Economic Factors [40%]
 - High school graduation (5%)
 - Some college (5%)
 - *Unemployment (10%)*
 - *Child poverty (7.5%)*
 - *Income inequality (2.5%)*
 - Children in single-parent households (2.5%)
 - **Social associations (2.5%)**
 - Violent crimes (2.5%)
 - Injury deaths (2.5%)

- Physical Environment [10%]
 - Air pollution—particulate matter (2.5%)
 - Drinking water violations (2.5%)
 - Severe housing problems (2%)
 - Driving alone to work (2%)
 - Long commute – driving alone (1%)

20% of these factors are poverty measures
Another 48% are correlated with poverty

Questions and Answers